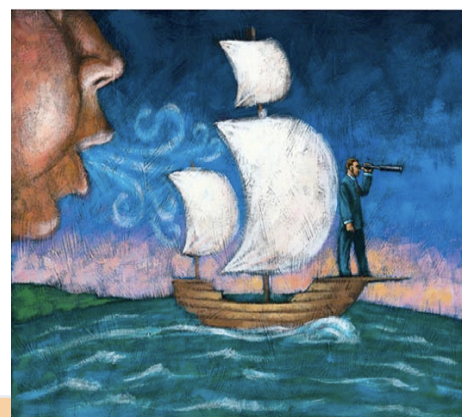


# Inspirational Leadership™

Encouraging Others to  
Do Great Things



## EXECUTIVE SUMMARY

Challenging times require extraordinary leaders. In this intensive program, leaders begin by looking inward, focusing on what inspires and motivates them. They learn and practice key skills for inspiring others and then select a project and form action-learning teams to apply what they have learned in a way that helps create an inspiring culture within their organization.

Using the “stone soup” metaphor from folk literature, this powerful, experiential program provides leaders with the insights and skills to inspire team members to believe in the extraordinary work they can do together if everyone contributes and builds the vision of success together.

## WORKSHOP MATERIALS

Every participant receives a bound workshop manual, with examples, worksheets, checklists and a practical tool to support inspirational leadership.

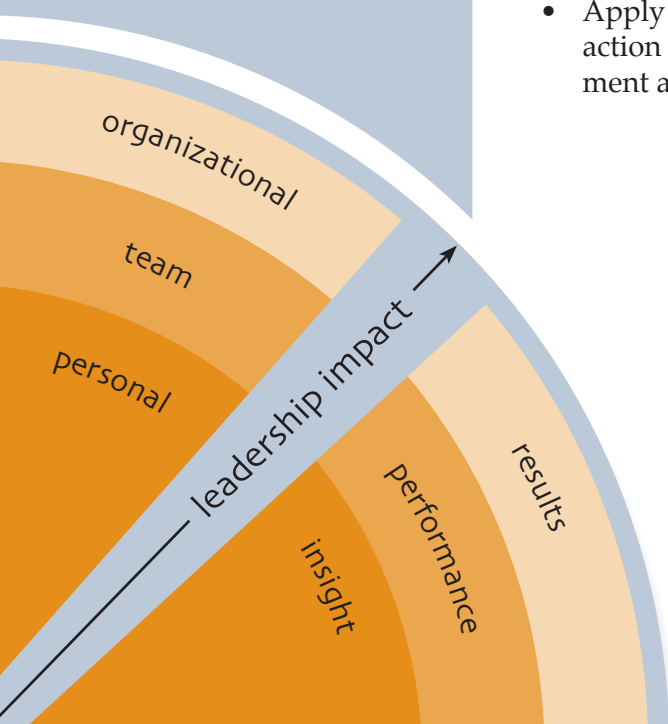
## WHO IS IT FOR?

Formal and informal leaders, high-potential managers and executives; idea champions.

## WHAT WILL I BE ABLE TO DO AFTER PARTICIPATING?

*You will be better able to:*

- Define inspirational leadership and describe the relationship between inspiration and motivation
- Explore your personal mission, values, and vision and help others to articulate theirs
- Facilitate the development of a team vision
- Demonstrate inspirational leadership skills such as inspiring, engaging, building trust, and sustaining commitment
- Apply skills and knowledge to a new leadership opportunity and form action learning cohorts to support and expand one another's development as leader



At businessfruit we are passionate about helping you deliver results. We provide powerful, practical and globally-proven workshops on a local, regional or worldwide basis - workshops that help you drive lasting improvements in personal, team and organizational performance.

To find out more about this workshop and our other programs:

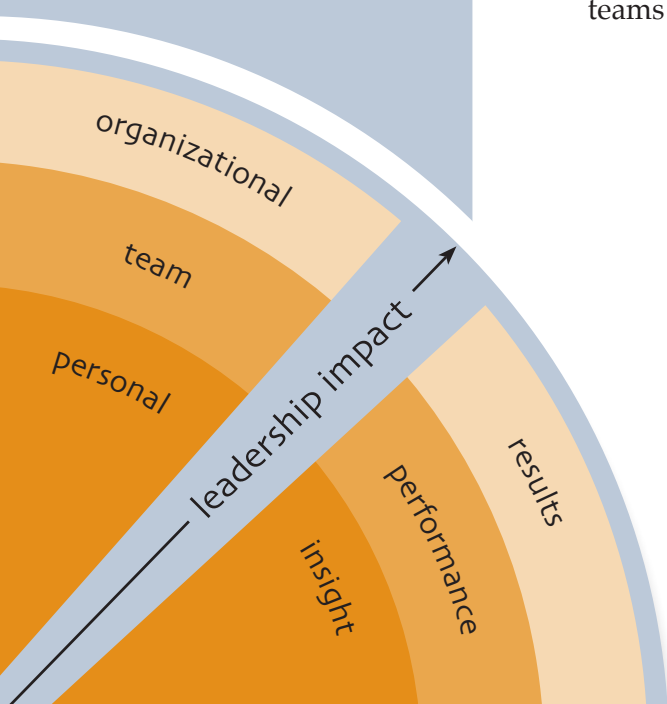
1. email businessfruit at: [info@businessfruit.com](mailto:info@businessfruit.com)
2. phone Hywel Thomas at businessfruit on: +32.476.611.317
3. visit our web site at [www.businessfruit.com](http://www.businessfruit.com), and 'contact us'

# Inspirational Leadership™

Encouraging Others to Do Great Things

## CORE PROGRAM

- **Introduction**
  - Define leadership and inspirational leadership; differentiate between leadership and management
- **Motivation and Inspiration**
  - Review of key motivation theories; clarify differences and relationship between motivation and inspiration; introduction of intrinsic motivation tool; discussion of individual differences in motivation
- **Understanding One's Own Mission, Values, and Vision**
  - Development of a "Leadership Crest" signifying core principles
- **Learning about Others' Mission, Values, and Vision**
  - Practice in drawing others out about core principles
- **Your Leadership Voyage**
  - Reflection on one's development as a leader; practice in communicating key points and lessons learned through "leadership storytelling"
- **Inspirational Leadership Characteristics**
  - Introduction of Inspirational Leadership Characteristics model; relate to skills and actions of selected leaders
- **Leadership Skills Model**
  - Practice in managing a competitive, time-bound innovation journey through all the phases
- **Skill Practice: Inspiring, Engaging, Building Trust, and Sustaining**
  - Intensive practice and feedback on inspirational leadership skills
- **Creating an Inspiring Culture**
  - Development of an inspiring team vision; commitments to take action
- **Learning Project/Learning Teams**
  - Identification of an application project and formation of action learning teams



**businessfruit**  
TRANSFORMING PERFORMANCE™

w: [www.businessfruit.com](http://www.businessfruit.com)  
e: [info@businessfruit.com](mailto:info@businessfruit.com)  
t: +32 476.611.317

Inspirational Leadership™ has been developed by and is a trademark of Barnes & Conti Associates, Inc. ALL RIGHTS RESERVED. ©2005